



1

Foul!

**For one soccer player,
a little bruise is about to cause
some big problems.**

On Saturdays, Bo Salisbury played indoor soccer with teenagers from his church.

Salisbury was a 43-year-old postmaster in Nevada City, California. He usually played goalkeeper. In that position, he was used to getting bumped and bruised.

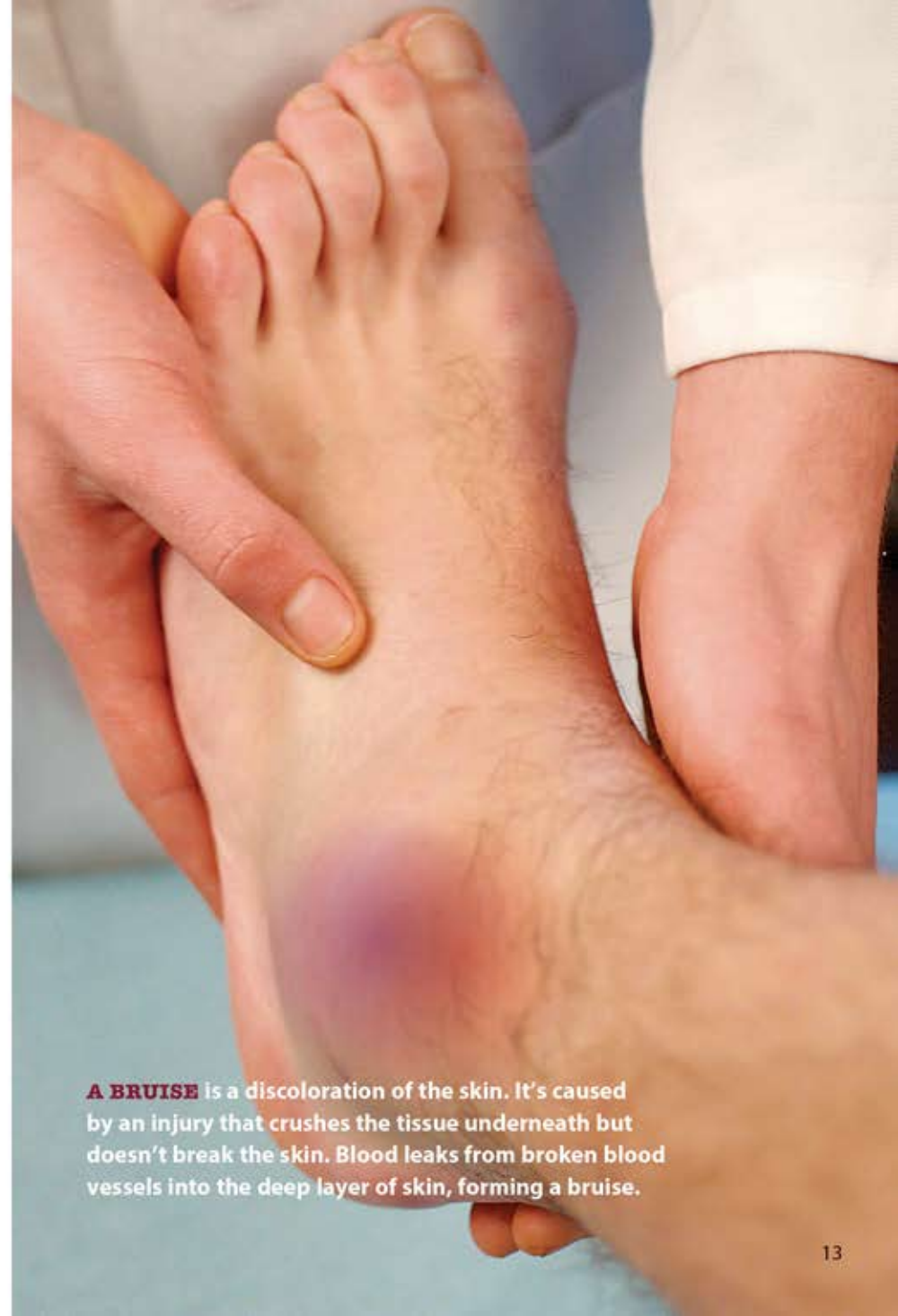
Salisbury was in the goal on May 9, 1998. It was a typical Saturday. He had a cold, but that wasn't going to slow him down. At one point during the game, players crowded around the goal, fighting for the ball.

Salisbury blocked a shot. But on his follow-through, the shooter accidentally kicked Salisbury on the left ankle. Salisbury limped off the field with a stinging bruise.

Just a Bruise?

The next day, the pain was worse. Salisbury took some aspirin. Then he had lunch at a local Chinese restaurant. By 2:00 P.M., his ankle was killing him. Salisbury went to the emergency room at a nearby hospital. A doctor examined Salisbury's ankle, which was turning red. The doctor decided it was just a nasty contusion, or bruise. He gave Salisbury some painkillers and sent him home.

By Monday morning, Salisbury was in terrible pain. He was sweating and felt sick to his stomach. His leg throbbled. He went to see his doctor, who sent him straight to the hospital. He told the doctors there that he felt like he was dying.



A BRUISE is a discoloration of the skin. It's caused by an injury that crushes the tissue underneath but doesn't break the skin. Blood leaks from broken blood vessels into the deep layer of skin, forming a bruise.



2

Critical Condition

**Salisbury is failing fast.
And his doctors are stumped.**

Doctors at the hospital were concerned. It was clear that Bo Salisbury had more than a bruise. But what was causing his terrible symptoms? The doctors needed a diagnosis—and fast.

They took Salisbury's blood pressure. It was dropping quickly. They examined his leg. A blue-gray bruise had begun to spread out from his ankle. Doctors took a blood sample to test for a bacterial